

78± Acres with Gravel Pits in 2 Parcels



Westwold, BC

**Reserved Online Auction
Sep 16 - 18, 2025**

DISCLAIMER

All information and documents provided in connection with this property are believed to be accurate but are not guaranteed and should not be relied upon without independent verification. BC Farm & Ranch Realty Corp., the Houweling Real Estate Team, and TEAM Auctions make no representations or warranties, expressed or implied, as to the accuracy or completeness of the information. Buyers are advised to conduct their own due diligence and rely on their own skill, judgment, and advisors in evaluating and purchasing the property.



78± Acres in 2 Parcels in Westwold, BC

Located just 5 minutes off Highway 97 and only 45 minutes from Kamloops, these two adjoining parcels in Westwold, BC present a rare opportunity to acquire a fully permitted, operational gravel pit in the heart of the Thompson/North Okanagan region. Selling in a reserved real estate auction with a Buy It Now option available until August 26. These properties offer strong output and long term development potential.



Parcel 1 includes 20± acres, while Parcel 2 spans 58.56± acres—together forming a 78± acre site with high-quality material reserves. The gravel and rock extracted from this pit meet all Ministry of Transportation and Infrastructure (MoTI) and concrete aggregate specifications, making it ideal for road construction, concrete production, and infrastructure projects. With strong local demand and excellent access.

Both parcels are zoned AF-1 and partially located within the Agricultural Land Reserve (ALR), offering a unique mix of permitted industrial use and long-term land value. The location, accessibility, and volume output make this a highly attractive acquisition for contractors, developers, and investors alike.

Whether you're expanding an existing operation or securing a strategic foothold in BC's interior resource sector, this gravel pit delivers immediate value and future upside.



Buy them now until August 26, 2025, or register to bid in the reserved online auction, September 16–18, 2025.

Open viewing: Open House: Sep 4 - 11 AM to 2 PM*

***BC Farm & Ranch and Team Auctions representatives will be present for the scheduled viewing. If you're unavailable at that time, the property can be viewed by request on an alternate date.**



Mark Your Calendar.

Auction Dates:

Bidding Opens - 10AM Sep 16 (PDT)

Bids Start Closing - 10AM Sep 18 (PDT)



NORTH

WESTWOLD BC

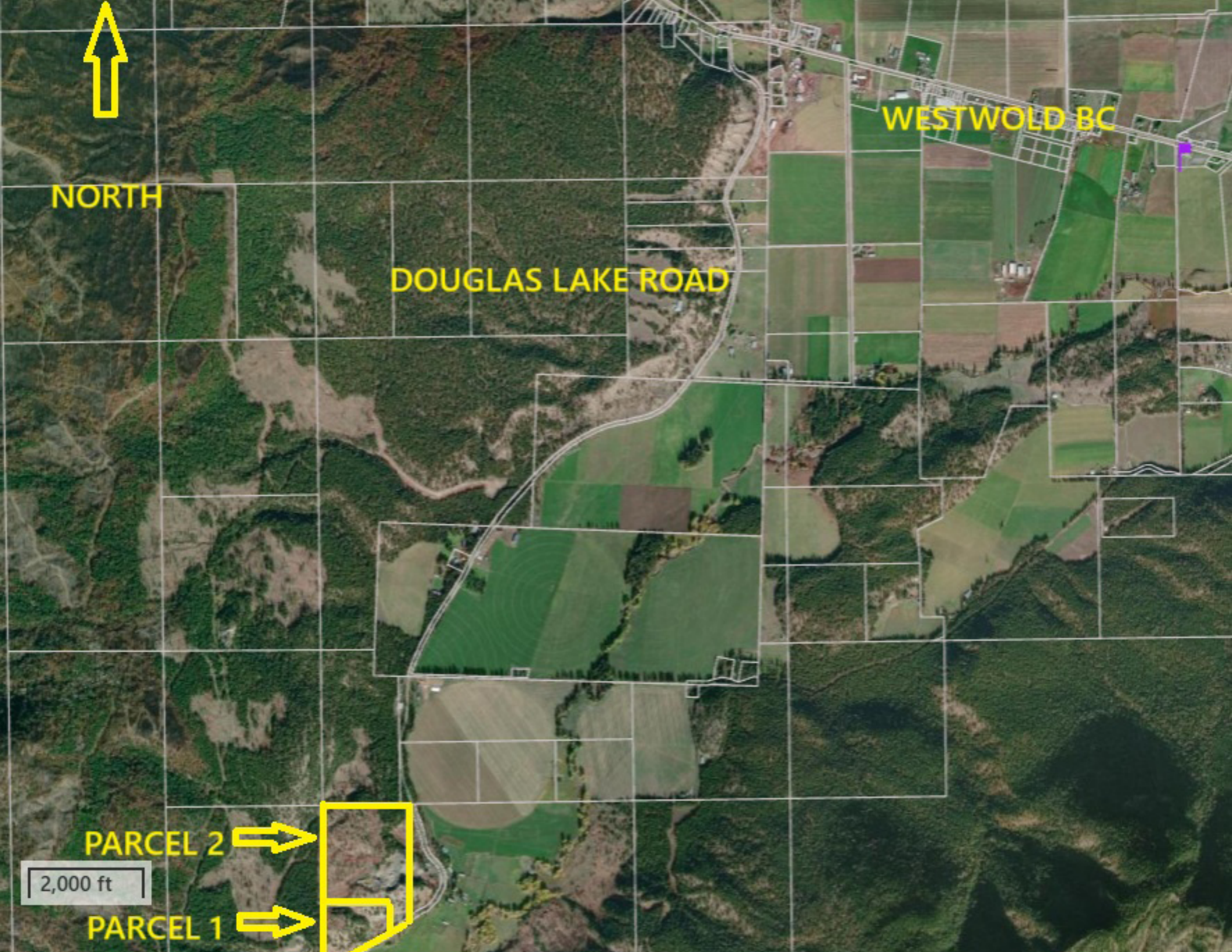
DOUGLAS LAKE ROAD

PARCEL 2



2,000 ft

PARCEL 1



HOW TO PLACE YOUR BID

1

In order to bid on any of our auctions, make sure to go to online bidding from your desktop or access the bidding platform directly from our app.

LOGIN

SIGN UP

Check that you are **logged in** to your account in the top right corner, and that you are **registered** for the auction.

2

Go to your desired sale and click or tap

LOTS

REGISTER TO BID

31 LOTS

3

Navigate to the lot you'd like to bid on and click or tap

PLACE BID

4

Bidding increases in **increments**. You can enter a custom bid or select an increment from the dropdown menu.

CAS

DISMISS ANY USE OF COOKIES POP-UPS THAT COULD INTERFERE WITH YOUR ABILITY TO BID.

Cookies help us deliver our services. By using our services, you agree to our use of cookies.

DISMISS

[Learn more.](#)

MAX BID

- The **Max Bid** is the highest amount you have bid on a lot and is only visible to you. Until someone bids above it, you are the **Winning Bidder**. You can edit your Max Bid at anytime.
- Our **Auto Max Bidding System** ensures that if another bidder places a bid below your Max Bid, they will be instantly outbid until you reach one increment higher than your max bid.

INDIVIDUAL LOTTING

- Most of the lots in our auctions have different closing times and are subject to their own time extension, not affecting other lots' closing time.

GROUP LOTTING

- Group Lotting** means that several lots are bundled together and share the same closing time.
- Group Lots can be identified by the thin gray outline surrounding them, and **GROUP (## Lots)** in the top left corner.

Note: Each lot within the group can be sold at a different price and/or to a different buyer

TIME EXTENSION

If a bid is placed in the last 2 minutes of the close time, the countdown will automatically reset to 2 minutes to ensure everyone has time to bid.

WATCH LIST

You can save the lots you're interested in by clicking the "watch" button or on the star icon ★ next to the lot number. By activating "watch" on a lot, you will be notified of any changes or updates.

WINNING BIDDER

When you are the **Winning Bidder**, your bid will be **bold** and **blue** with your Max Bid to the right and **WINNING** displayed over the lot.

JUMP THE BID

Click or tap the **Jump The Bid** button immediately or at anytime to implement your Max Bid as the current bid, displayed to all bidders.

BEING OUTBID

If you are **Outbid**, you will still see your last bid with the new current bid to the right, and **OUTBID** displayed over the image.

If your bid matches the current Max Bid, your bid and the current bid will be the same, but you will still be outbid.

The screenshot displays a group of 25 lots. The first lot, LOT 1001, is a winning bid of CA\$51,000 with a max bid of CA\$55,000. The second lot, LOT 1002, shows a current bid of CA\$236,000 and a 'You Bid' of CA\$235,000. The third lot, LOT 1003, shows a current bid of CA\$320,000 and a 'You Bid' of CA\$320,000. Each lot entry includes a description, contact information, and location. Buttons for 'EDIT BID', 'JUMP THE BID', and 'PLACE BID' are visible.

Lot	Description	Contact	Location	Status	Your Bid	Current Bid
LOT 1001	Parcel 1: +/-484 acres - Feedlot NW, SW, SE 8-15-7-W2 & NE	Ria Braaksma 780-446-3006	Grenfell, SK	WINNING	CA\$51,000	CA\$55,000
LOT 1002	Parcel 2: +/-159.83 acres - NW 7-15-7 W2	Ria Braaksma 780-446-3006	Grenfell, SK	OUTBID	CA\$235,000	CA\$236,000
LOT 1003	Parcel 3: +/-159.9 acres - NW 12-15-8 W2	Ria Braaksma 780-446-3006	Grenfell, SK	OUTBID	CA\$320,000	CA\$320,000



Questions about our auction process?

TEAM
AUCTIONS

Sekura Auctions Since 1966

Rod McLennan
587-998-2095

Questions about the property?



Gord Houweling
604-793-8660

587-464-2125

teamauctions.com