

PART 11 PRIMARY INDUSTRY DISTRICTS**11.1 AG – AGRICULTURE DISTRICT****.1 General Purpose**

This district accommodates traditional agricultural operations and the supportive services that are essential to grow and sustain the agricultural industry. This district distinguishes between major, minor and residential where:

AG-Major are tracts of land 16ha (39.5ac) or larger in size;

AG-Minor are *parcels* between 4ha (9.8ac) and 15.9ha (39.3ac); and

AG-Residential are *parcels* smaller than 4ha (9.8ac).

.2 Uses

Permitted Uses	Discretionary Uses
<i>Accessory dwelling unit****</i>	<i>Accessory dwelling unit****</i>
<i>Accessory, building*</i>	<i>Accessory, building*</i>
<i>Accessory, use*</i>	<i>Accessory, use*</i>
<i>Bed and breakfast</i>	<i>Agricultural support service</i>
<i>Diversified Agriculture</i>	<i>Auctioneering establishment**</i>
<i>Dugout</i>	<i>Cannabis production and distribution, micro</i>
<i>Dwelling, single detached</i>	<i>Community garden</i>
<i>Family day home</i>	<i>Data Processing Facility</i>
<i>Farm help accommodation</i>	<i>Equestrian facility***</i>
<i>Group home, minor</i>	<i>Group home, major</i>
<i>Home-based business, level 1 (office)</i>	<i>Home-based business, level 3</i>
<i>Home-based business, level 2</i>	<i>Kennel and animal boarding</i>
<i>Intensive agriculture</i>	<i>Landscaping contractor service***</i>
	<i>Solar farm</i>
	<i>Temporary asphalt plant**</i>
	<i>Temporary concrete batch plant**</i>
	<i>Topsoil screening</i>
	<i>Veterinary clinic</i>
	<i>Visitor accommodation***</i>

* Refer to Section 6.1 for further clarification.

** Only allowed on AG-Major parcels

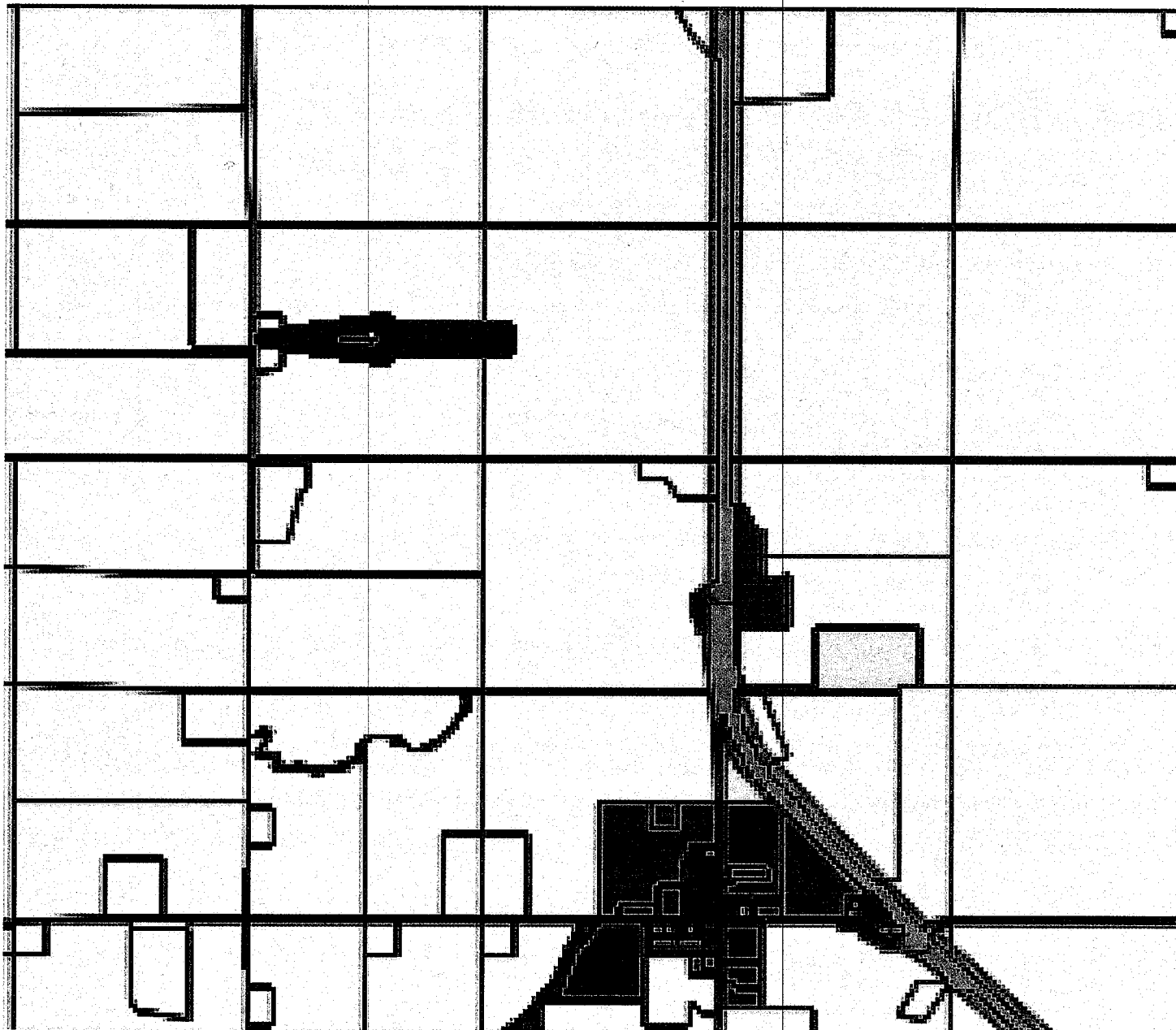
*** Only allowed on AG-Major and AG-Minor parcels

**** Refer to Section 6.1A for further clarification.

1407/18; 1432/19; 1436/19; 1560/21; 1570/22; 1587/22, 1597/22

.3 Subdivision Regulations

- (a) Unless otherwise indicated within a *planning document*, a *quarter section* in the AG district of 64.7ha (160ac) shall contain a maximum combined *density* of four *parcels*, comprised of:
- (i) two AG – Major *parcels* of approximately 32.4ha (80ac) each or alternative sizes necessary due to *land fragmentation*; and
 - (ii) two AG – Residential *parcels* (one of which may be subdivided from each AG – Major *parcel* having a minimum size of 32.4ha (80ac) in accordance with Paragraph 11.1.3(e) of this Bylaw).
- (b) Notwithstanding Subparagraph 11.1.3(a)(ii), the Subdivision Authority may consider the subdivision of a second AG – Residential parcel from the same 32ha (80 ac) AG parcel when all of the following criteria are met:



County map.