

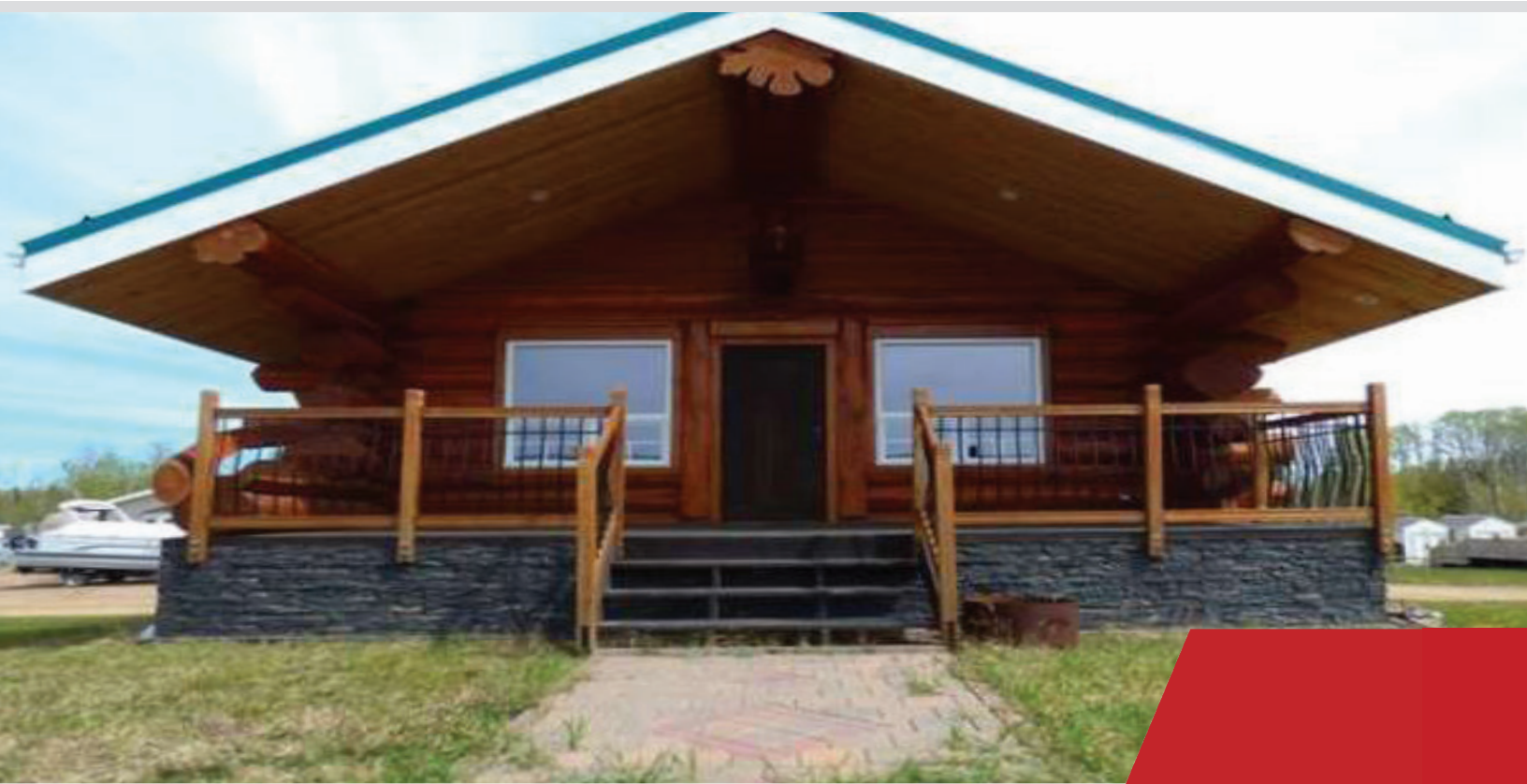
TEAM AUCTIONS

Sekura Auctions Since 1966

Unreserved Online Timed Real Estate Consignment Auction Various Consignors, Various Locations

BIDDING OPENS: 9 AM – Tue, Jun 14

BIDS START CLOSING: 9 AM – Thu, Jun 16



UNPACK AND PLAY!

2014 Newly Built Log Home 128 65275 Rg Rd
114A Elinor Lake Resort, Lac La Biche, AB

3 Bed, 2 Bath, Log Cabin on 3672 sq ft Lot.
A Perfect 4-Season Home or Fantastic
Recreational Getaway Property!

[team**au**ctions.com](http://teamauctions.com)

RE/MAX

Lac Biche Realty

REAL ESTATE SERVICES:

Stacie Dease
780-623-8974

Highlights of Real Estate Auction Terms

- 1. UNRESERVED:** The seller has agreed to accept the highest bid regardless of price. Property will sell to the highest bidder without minimum or reserve.
- 2. AGENT OF THE SELLER:** Real Estate Brokerage (RE/MAX) acts only as agent of the seller and not as agent of the Buyer. They will provide prospective buyers with all facts known to the agent that will or may affect the marketability or value of the property.
- 3. NO WARRANTY:** The Buyer shall accept the Property as-is where-is and specifically agrees that neither the Seller, Auctioneer or Realtor makes any representations or warranties of any kind as to the condition or fitness of the Property, environmental or otherwise, or any improvements thereon.
- 4. It is the RESPONSIBILITY OF ALL BIDDERS** to review all information provided, including "Property Information Package" from the Real Estate Brokerage and the terms of this auction. All information provided is meant as a guide only. Bidders shall have satisfied themselves as to the descriptions, location and condition of the property prior to bidding. If clarification is required, it is the bidder's responsibility to obtain clarification from Real Estate Brokerage prior to bidding.
- 5. GST:** Bid price does not include any applicable GST unless announced otherwise by auctioneer.
- 6. DEPOSIT:** Immediately at the close of bidding the successful bidder will make a NON REFUNDABLE deposit payable to the real estate brokerage (as listed in the Property Information Package) in the form of a bank draft or other approved payment. Amount is listed in Property Info Package/or as announced by auctioneer.
- 7. PURCHASE CONTRACT:** The Real Estate Purchase Contract that applies to each property will be available for inspection prior to the auction. Title(s) will be clear of encumbrances except those which are to remain on the title. All bidders agree that, should their bid be accepted, they will complete and be bound by the terms of the purchase contract. Buyer will pay the balance of the purchase price to their lawyer on or before Completion Day. Possession will be in accordance with the terms of the Purchase Contracts.

Note: These contracts will not be subject to any buyer's conditions.

****TEAM SEKURA AUCTION MAIN SALE TERMS ALSO APPLY.**

NOTE TO BIDDERS

- When registering to bid you will be required to have a Letter of Confirmation of Funds from your bank. Letter of Confirmation must be on Bank Letterhead with your name and/or company name and amount of funds you have access to that you wish to spend up to. This letter of confirmation will have to be emailed to **TEAM Auctions**.
- Internet Bidding Fees: 5% up to a max of \$1,500 per item.
- If you are the successful bidder, to meet the obligations set by the federal government, you will be asked to verify your identification. You will also need to provide us with your lawyer info to complete the real estate transaction.

HIGHLIGHTS OF PURCHASE CONTRACT

Completion Day	June 16th, 2022 a 5% (non-refundable) EFT deposit payable to Re/Max La Biche Realty due from successful bidder upon close of bidding/signing of purchase contract
Deposit	Cash and virtual currency will not be accepted
Included Goods	Stove
Excluded Goods	
Conditions	There are no Buyers Conditions
Additional Terms	<ul style="list-style-type: none">The property sells as is with no warranties of any kind whatsoever as to the condition or fitness of the Property, environmental or otherwiseNo Real Property Report will be provided

Copy of Purchase Contract is available at 780-898-0729
Contract must be signed by successful bidder upon bidding closing

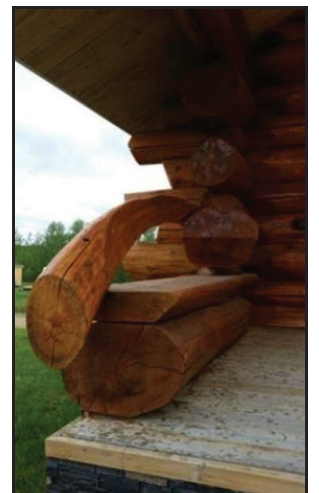
Property Information

LOG HOME

Dreaming of a log home or recreational getaway? Well, look no further! This 4-season, 3 bedroom, 2 bathroom log cabin with a fully developed basement is brand new, built and never lived in and it's awaiting a family. All the comforts of home with power, gas, municipally serviced water and sewer. Located at Elinor Lake Resort in a gated community offering all the activities for the outdoor enthusiast - fishing, hunting, boating, sledding, quadding in the back country and hiking all accessible from the park. Situated on a corner lot, there is even a spot for friends or family to park an RV and they can hook up to power and water while visiting. This Pioneer built log home has been nicely finished with great attention to detail. Condo fees include water and sewer and are \$1600.00 yearly. GST applies. Act fast, this one is not going to last! Priced to sell immediately, call to view today!

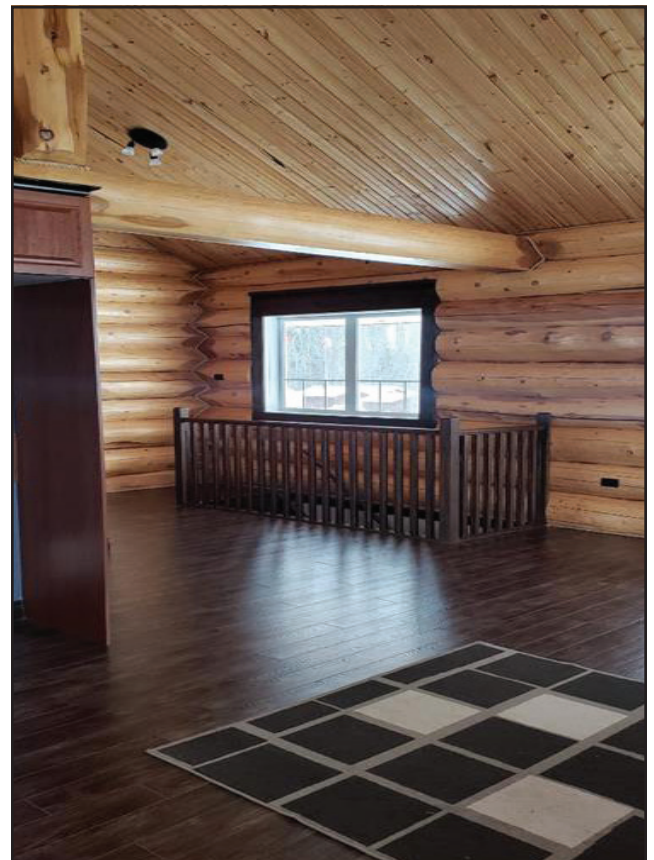


Type	House
Style	Detached Cottage / Cabin
Year Built	2014 New Home
Tot A.G. Sq. Ft.	57.97
Full Baths	1
Half Baths	1
Bdrms Total	3
Foundation	Poured Concrete
Construction	Log
Roof	Metal
Flooring	Carpet, Ceramic Tile, Laminate
Heating Type	Forced Air
Exterior Feat	RV Hookup
Comm Features	Park
Features	High Ceilings, Natural Woodwork
Appliances	Electric Stove
Basement	Finished, Full
Condo Fee	\$1600.00 Annually
Condo Fee Includes	Professional Management, Sewer, Water
Taxes 2021	\$825.40
Lot Size	3672 Sq. Ft.
Parking	Total: 2



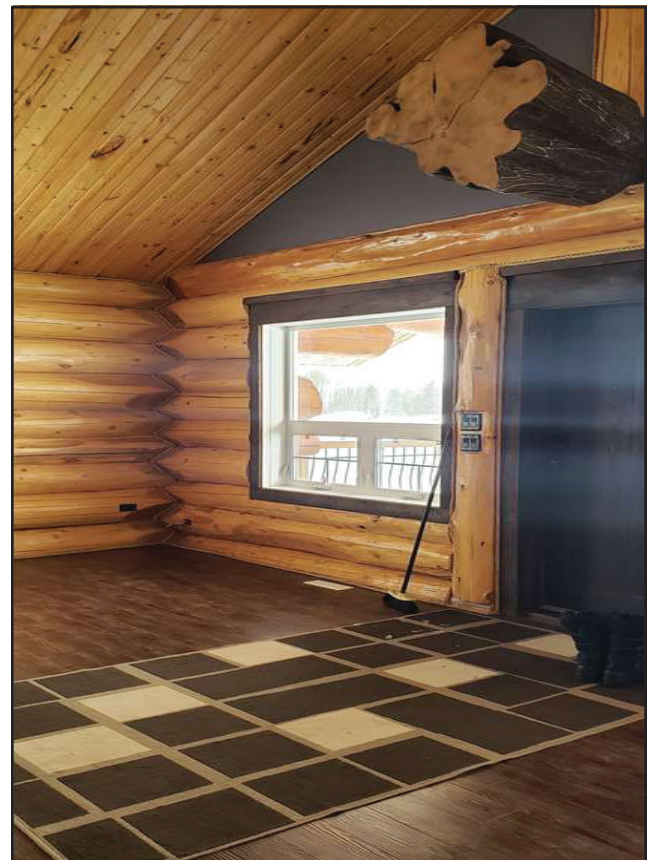
Full Listing @ teamauctions.com

Property Photos



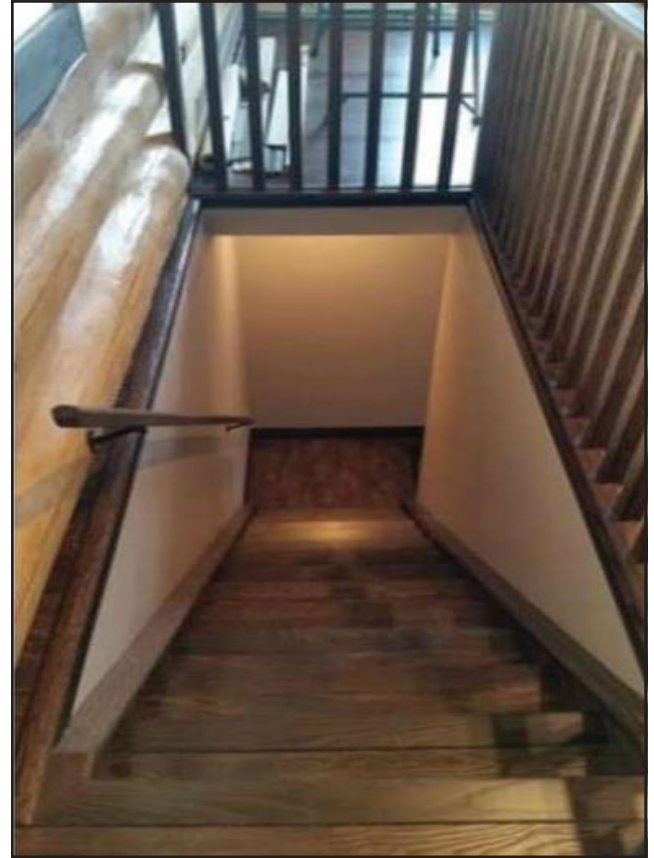
Full Listing @ teamauctions.com

Property Photos



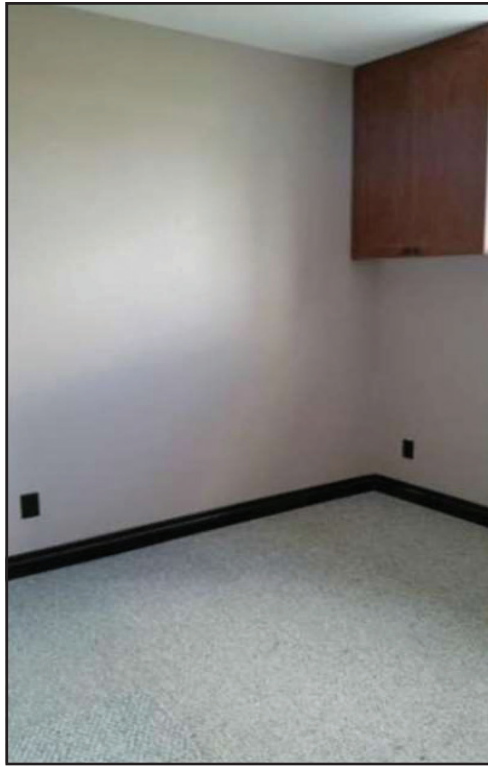
Full Listing @ teamauctions.com

Property Photos

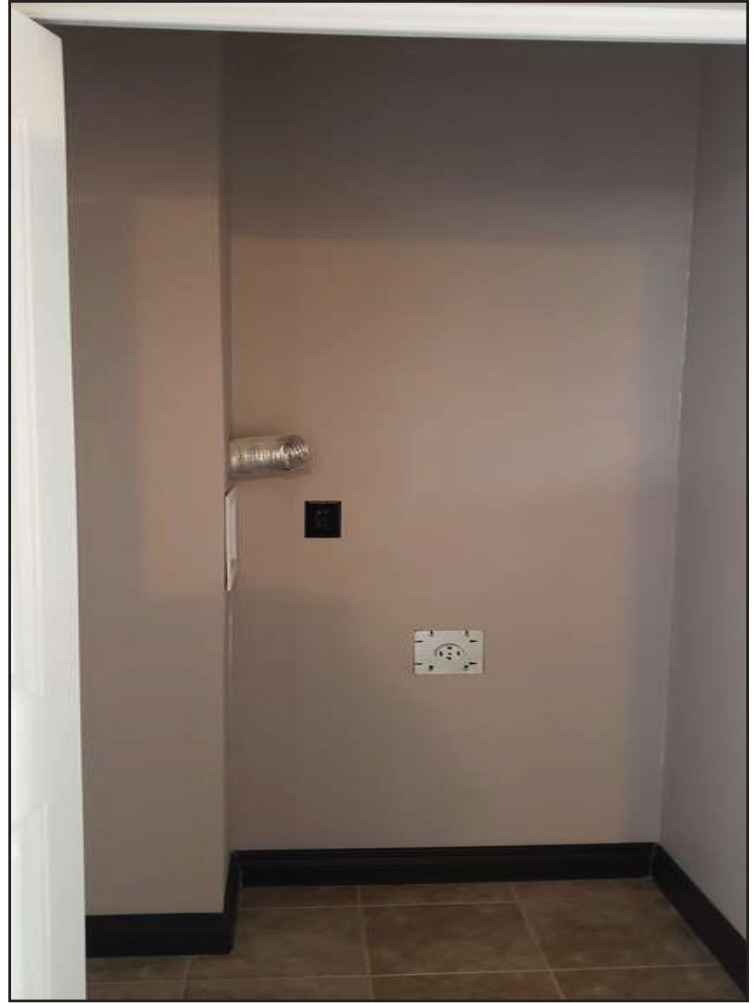


Full Listing @ teamauctions.com

A photograph of an empty room with beige walls, a black window frame, and a black baseboard. A bright light source is visible through the window, casting a strong shadow on the carpeted floor.



Property Photos



Full Listing @ teamauctions.com

BARELAND CONDO

Condominiums are special pieces of real estate where part of the property is owned privately and part is owned by everyone together.

In bareland condominiums, the lots are owned privately. Things like the roadways are common property, owned together.



Full Listing @ teamauctions.com

NATURAL AREA



ELINOR LAKE

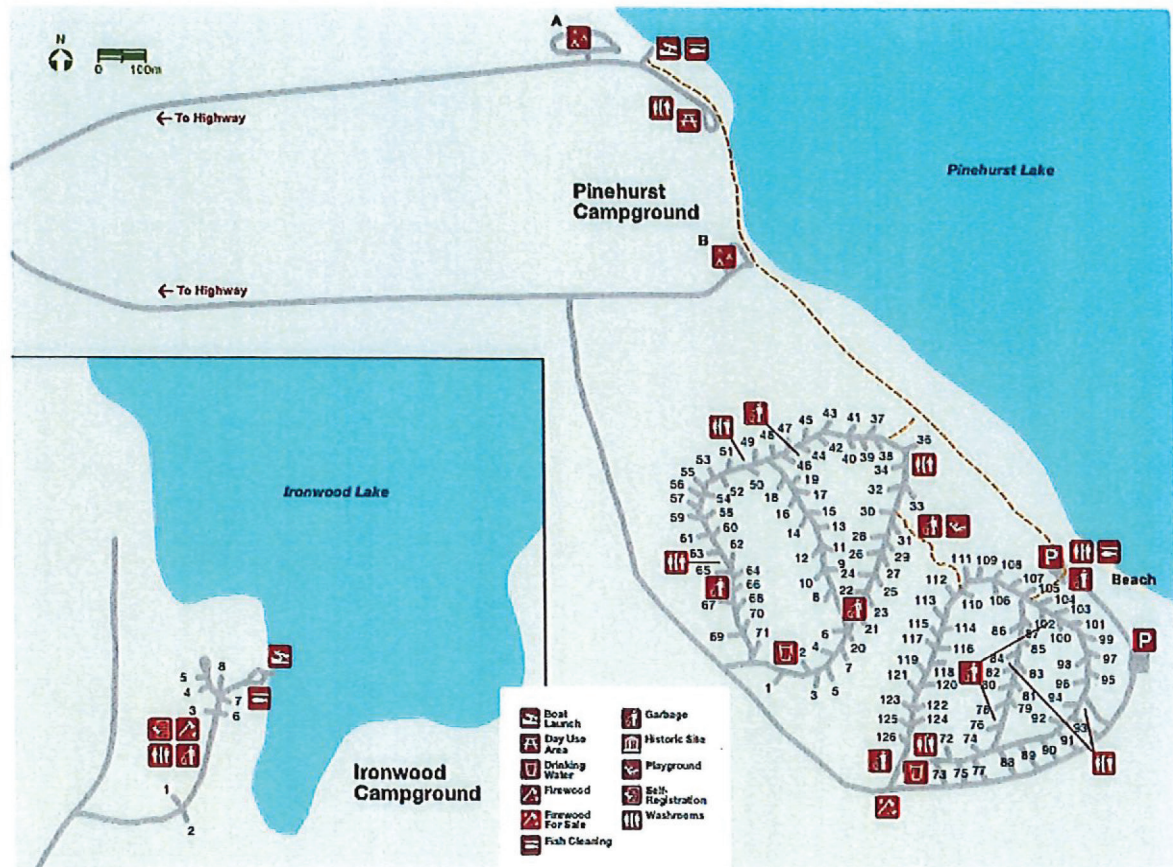
Lakeland

Scale 1:50,000

Contour interval 100 feet

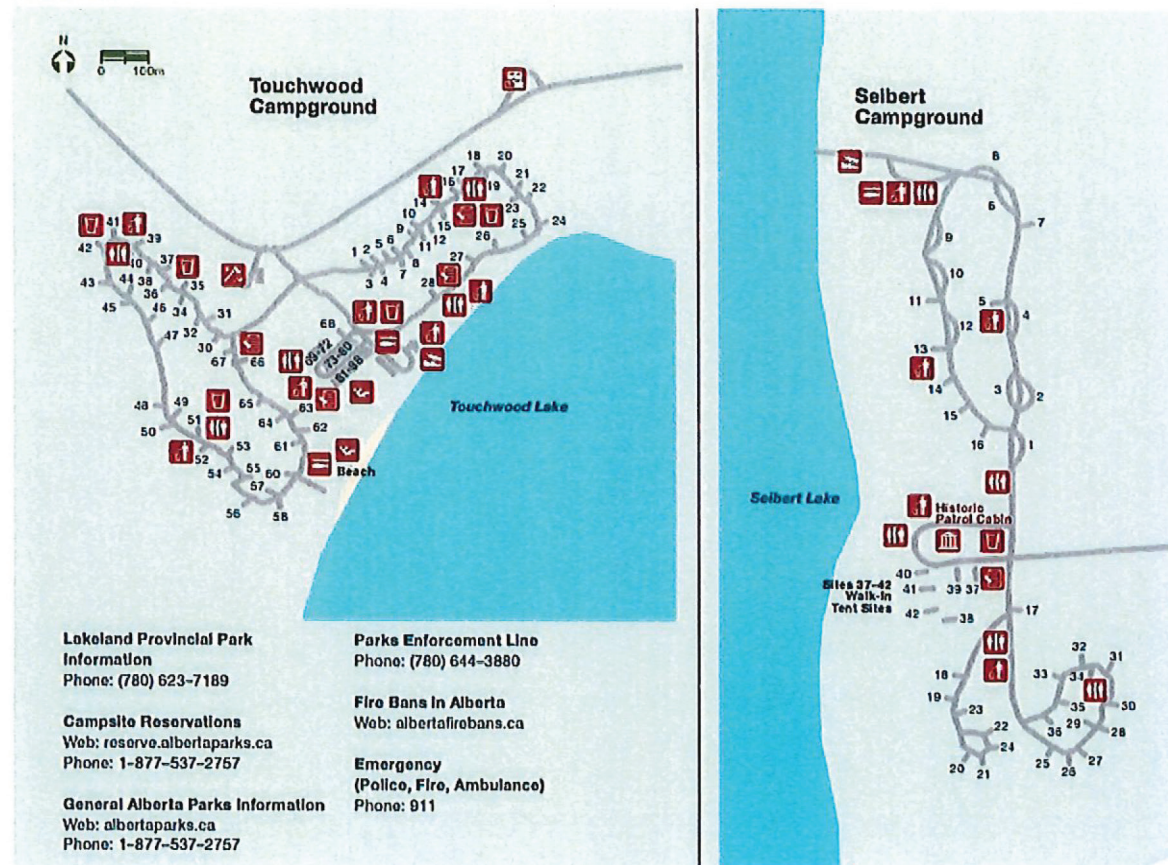
Legend:

- 1. Contour line
- 2. Boundary of Camp/Trail
- 3. Boundary of Lake
- 4. Parking
- 5. ATV/Boat Area
- 6. Hot/Cold
- 7. Airway/Weather Station
- 8. Bridge
- 9. Railway
- 10. Road
- 11. Trail
- 12. Water
- 13. Forest
- 14. Wetland
- 15. Wetland
- 16. Wetland
- 17. Wetland
- 18. Wetland
- 19. Wetland
- 20. Wetland
- 21. Wetland
- 22. Wetland
- 23. Wetland
- 24. Wetland
- 25. Wetland
- 26. Wetland
- 27. Wetland
- 28. Wetland
- 29. Wetland
- 30. Wetland
- 31. Wetland
- 32. Wetland
- 33. Wetland
- 34. Wetland
- 35. Wetland
- 36. Wetland
- 37. Wetland
- 38. Wetland
- 39. Wetland
- 40. Wetland
- 41. Wetland
- 42. Wetland
- 43. Wetland
- 44. Wetland
- 45. Wetland
- 46. Wetland
- 47. Wetland
- 48. Wetland
- 49. Wetland
- 50. Wetland
- 51. Wetland
- 52. Wetland
- 53. Wetland
- 54. Wetland
- 55. Wetland
- 56. Wetland
- 57. Wetland
- 58. Wetland
- 59. Wetland
- 60. Wetland
- 61. Wetland
- 62. Wetland
- 63. Wetland
- 64. Wetland
- 65. Wetland
- 66. Wetland
- 67. Wetland
- 68. Wetland
- 69. Wetland
- 70. Wetland
- 71. Wetland
- 72. Wetland
- 73. Wetland
- 74. Wetland
- 75. Wetland
- 76. Wetland
- 77. Wetland
- 78. Wetland
- 79. Wetland
- 80. Wetland
- 81. Wetland
- 82. Wetland
- 83. Wetland
- 84. Wetland
- 85. Wetland
- 86. Wetland
- 87. Wetland
- 88. Wetland
- 89. Wetland
- 90. Wetland
- 91. Wetland
- 92. Wetland
- 93. Wetland
- 94. Wetland
- 95. Wetland
- 96. Wetland
- 97. Wetland
- 98. Wetland
- 99. Wetland
- 100. Wetland



December 2020

Alberta



Lakeland Provincial Park
Information
Phone: (780) 623-7189

Campsite Reservations
Web: reserve.albertaparks.ca
Phone: 1-877-537-2767

General Alberta Parks Information
Web: albertaparks.ca
Phone: 1-877-537-2767

Parks Enforcement Line
Phone: (780) 644-3880

Fire Bans in Alberta
Web: albertafirebans.ca

Emergency
(Police, Fire, Ambulance)
Phone: 911

ELINOR LAKE

Legend: As examples, '3 over 63 cm' indicates a possession and size limit of '3 fish each over 63 cm' or '10 fish' indicates a possession limit of 10 for that species of any size. An empty cell indicates the species is not likely present at that waterbody; however, if caught the default regulations for the Watershed Unit apply. SHL=Special Harvest Licence, BKTR = Brook Trout, BNTR=Brown Trout, BURB = Burbot, CISC = Cisco, CTTR = Cutthroat Trout, DLVR = Dolly Varden, GOLD = Goldeye, LKTR = Lake Trout, LKWH = Lake Whitefish, MNWH = Mountain Whitefish, NRPK = Northern Pike, RNTR = Rainbow Trout, SAUG = Sauger, TGTR = Tiger Trout, WALL = Walleye, YLPR = Yellow Perch. Regulation changes are highlighted blue. Waterbodies closed to angling are highlighted grey.

NB1 - Lakes, Reservoirs and Ponds										
Waterbody	Waterbody Detail	Season	Bait ● = Bait allowed	WALL	NRPK	YLPR	LKWH	BURB	LKTR	Trout Total
Elinor Lake		OPEN MAY 15 TO MAR. 31	●	1 fish 45-50 cm	1 fish 63-70 cm	15 fish	10 fish	10 fish		
Ethel (Bear) Lake	Includes tributaries and outlet for 1 km	OPEN MAY 15 TO MAR. 31	●	0 or SHL tags	1 over 63 cm	15 fish	10 fish	10 fish		
Fishing Lake		OPEN MAY 15 TO MAR. 31	●		1 over 63 cm	10 fish				
Floatingstone Lake		OPEN MAY 15 TO MAR. 31	●	0 fish	0 fish	10 fish	10 fish	10 fish		
	Tributaries and outlet for 1 km	OPEN JUNE 1 TO OCT. 31	●	0 fish	0 fish	10 fish	10 fish	10 fish		
Fork Lake		OPEN MAY 15 TO MAR. 31	●		1 fish 55-63 cm	10 fish	10 fish	10 fish		
Francis Lake	69-11-W4	OPEN MAY 15 TO MAR. 31	●	0 fish	0 fish	15 fish				
Frog Lake	57-3-W4	OPEN MAY 15 TO MAR. 31	●	3 over 50 cm	1 over 63 cm	10 fish	10 fish	10 fish		
Gamer Lake	60-12-W4	OPEN MAY 15 TO MAR. 31	●	1 fish 45-50 cm	0 fish	5 fish		10 fish		
Garnier Lakes	58-4-W4	OPEN MAY 15 TO MAR. 31	●		1 over 70 cm	10 fish				
Goodfish Lake	61-13-W4	CLOSED ALL YEAR								
Goodwin Lake		OPEN MAY 15 TO MAR. 31	●		0 fish	15 fish				
Greenstreet Lake	60-11-W4	OPEN MAY 15 TO MAR. 31	●		1 over 63 cm					
Halfmoon Lake		OPEN MAY 15 TO MAR. 31	●		2 fish	15 fish				
Hanmore Lake	61-17-W4	OPEN MAY 15 TO MAR. 31	●		2 fish	10 fish	10 fish			
Heart Lake		OPEN MAY 15 TO MAR. 31	●	0 fish	0 fish	15 fish	10 fish	10 fish		
Hilda Lake		OPEN MAY 15 TO MAR. 31	●	0 or SHL tags	1 over 63 cm	15 fish	10 fish	10 fish		
Hope Lake		OPEN MAY 15 TO MAR. 31	●	0 fish	1 over 63 cm	15 fish	10 fish	10 fish		
Ironwood Lake	65-11-W4	OPEN MAY 15 TO MAR. 31	●	1 fish 50-55 cm	0 fish	15 fish	10 fish	10 fish		
Island Lake	62-17-W4	OPEN MAY 15 TO MAR. 31	●		1 over 55 cm	10 fish				
Kaduk Lake	60-15-W4	OPEN MAY 15 TO MAR. 31	●		1 over 63 cm	10 fish				
Kehiwin Lake		OPEN MAY 15 TO MAR. 31	●	0 fish	0 fish	15 fish	10 fish	10 fish		
Lac Bellevue	56-9-W4	OPEN MAY 15 TO MAR. 31	●	1 fish 45-50 cm	0 fish	10 fish				
Lac La Biche		OPEN MAY 15 TO MAR. 31	●	1 fish 50-55 cm	0 fish	15 fish	3 fish	10 fish		
	Tributaries and outlet; see La Biche River and Owl River	CLOSED ALL YEAR								

LAKELAND PARK

Lakeland Provincial Park

Canoe Circuit



Government
of Alberta



Lakeland Canoe Circuit

Lakeland Provincial Park, east of Lac La Biche, protects one of Alberta's best kept canoeing secrets. The park focuses on primitive "wilderness" recreation and features Alberta's only backcountry canoe circuit.

The main circuit of Jackson, Kinnaird, Blackett and McGuffin Lakes is 38 kilometres in length and takes around three days to complete. "Made in Lakeland"

canoe carts, available at portages on the main circuit, add to the ease of exploring this hidden treasure in northeast Alberta.

The canoe circuit is all flat water and an easy paddle. Just keep an eye on the weather, as the lakes can get choppy in short order.

albertaparks.ca

ISBN: 978-0-7785-9591-5

Lakeland Provincial Park Canoe Circuit

Sixteen back-country camping sites are located throughout the provincial park; many of these spots have multiple camp sites to accommodate larger parties or several small parties.

They are typically equipped with a backcountry composting toilet, fire pit, picnic tables and bear poles or bear lockers. Currently, these are not reserveable and can be used on a first come, first serve basis.

Most canoeists gain access from Jackson Lake Staging Area on Highway 663, locally called Touchwood Lake Road.

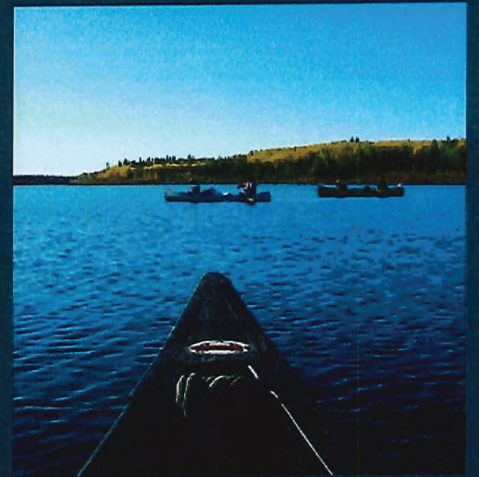
Please be considerate of other campers; pack out all garbage and try to leave the sites in better condition than you found them.

Resources

Backcountry Travel application and Lakeland Provincial Park & Recreation Area map are available online at:
<http://albertaparks.ca/publications>

or from the Lac La Biche office at:
Lakeland Provincial Park
and Provincial Recreation Area
Box 1019
Lac La Biche, AB T0A 2C0
Phone: (780) 623-5235
Fax: (780) 623-5239

For more information about Alberta Parks:
www.albertaparks.ca
1-866-427-3582



Government
of Alberta



albertaparks.ca

ISBN: 978-0-7785-9591-5

Lakeland Provincial Park Canoe Circuit

ABOUT ELINOR LAKE RESORT

Elinor Lake Resort's Amenities Include:



- Boat Launch
- Convenience Store
- Laundromat
- Shower
- Quad Wash
- Water Station
- Network of Trails

Visitors Can Also Enjoy

- Easy access to Lakeland Park Provincial Park
- Over 100 lakes within driving distance (lots of boating and fishing)
- Great bird watching
- Winter fun like ice fishing, cross-country skiing and snowmobiling
- A half hour drive to Lac La Biche
- Easy access from Edmonton and Fort McMurray



Lakeland Provincial Park

Lakeland Backcountry Guide

Alberta's provincial parks and recreation areas provide facilities and opportunities for outdoor recreation, protecting ecological processes within natural landscapes.

Lakeland Provincial Park and Provincial Recreation Area were designated in 1992. Their total area of 590 square kilometres is less than one per cent of Alberta's land base. Elevations vary between 580 and 780 metres above sea level. Most of the provincial recreation area and all of the provincial park are considered "backcountry".

Lakeland Provincial Park covers 147 square kilometres and includes Jackson, Kinnaird, McGuffin, Shaw, Dabbs, Helena and Blackett lakes. The park focuses on primitive "wilderness" recreation and features Alberta's only backcountry canoe circuit.

Lakeland Provincial Recreation Area is the largest provincial recreation area in Alberta. It covers 443 square kilometres, and includes Touchwood, Pinehurst, Ironwood and Seibert lakes. The recreation area supports a broad range of recreational pursuits, plus limited oil and gas extraction.

Lakeland is an outstanding example of boreal mixedwood and old growth forest and supports a wide variety of wildlife. The unspoiled lakes provide excellent water recreation including fishing, swimming, kayaking, canoeing and boating.

The area's high hummocky hills, gently rolling terrain and sandy beaches are the result of ancient glacial activity and more recent erosion and deposits. Aspen, white spruce, balsam poplar, jack pine, black spruce, tamarack and willow can be found throughout Lakeland, each in their own favourite micro environments.

This variety of habitats supports equally diverse communities of wildlife from large species like moose, deer and woodland caribou, to fur bearing animals like river otter, wolf, lynx, beaver and wolverine. Bird species range from breeding waterfowl and birds of prey to song birds. Lakeland provides nesting habitat for the western and red-necked grebes, and is recognized internationally as an Important Bird Area.

Historically, this area was very busy. The Hudson Bay Company and the North West Company used it for access to the far north and west by way



of the Athabasca River. In pre-European contact times, people of the Woods Cree, Chipewyan, Blackfoot, Sekani, Sarcee and Beaver occupied this hospitable region. Archaeological evidence indicates there have been people here as far back as 7500 years.

Most recent history of the area includes a successful commercial fishery on Pinehurst Lake in the early 1900s as well as commercial trapping around Pinehurst and Touchwood lakes. Fur farming and an associated feed fishery operated off and on after WWII until the late 1990s. Sawmills operated on Touchwood, Pinehurst, Seibert, Jackson and Blackett lakes in the 1920s - often on the ice in winter.

The first campground in Lakeland was built in the early 1960s on Pinehurst Lake.

Facilities

Located east of Lac La Biche, several campgrounds, day use areas and staging areas can be accessed from Highways 663, 55 and 36.

The provincial recreation area has four campgrounds at Touchwood, Pinehurst, Ironwood and Seibert lakes, with a total of 211 basic campsites. Travel to all but Seibert Lake is on paved and high grade gravel roads. Access to Seibert Lake is via dry weather trail and four-wheel drive is recommended.

Jackson Lake Staging Area, Dabbs Lake Staging Area and Shaw Lake Day Use Area provide access to 45 kilometres of trails for hiking, bicycling and cross-country skiing. Another 140 kilometres of shared non-motorized and ATV/snowmobile trails are also found within Lakeland. ATV access at Mile 10 Staging Area and non-motorized access at Jackson Lake Staging Area provide access to the 38 kilometre-long Interior Lakes Canoe Circuit.

Shaw Lake Staging Area is the trailhead for Mosquito Lake Trail. This day use area provides all-season primitive services, a chalet and access to cross-country ski trails. It also provides access to more day-use areas, beaches and nature trails.

The new hiking trail from Touchwood Campground to Bareass Point is 7 kilometres in length (14 km round trip) and offers beautiful viewpoints and three walk-in campsites.

Year-Round Activities

In summer: camping, picnicking, boating, fishing, hiking, bird watching, photography, swimming, sun bathing, water sports, cycling, wildlife viewing.

In winter: camping, ice-fishing, hunting, snow-shoeing, cross-country skiing, wildlife viewing.

More than 30 backcountry campsites situated on various lakeshores enhance backcountry activities such as canoeing, hiking and cross-country skiing.

Boating

Minimize your impact:

- Fill gas containers and motors on land.
- Don't operate your boat near or through groups of birds.
- Try to operate your boat in ways that minimize wake; avoid flooding floating nests by reducing speed when manoeuvring near them.

All boats must carry one approved life jacket for each person on board, two oars with rowlocks or two paddles, one hand-held bailer or manual pump, floating line, waterproof flashlight or flare and some type of sound device for signalling.

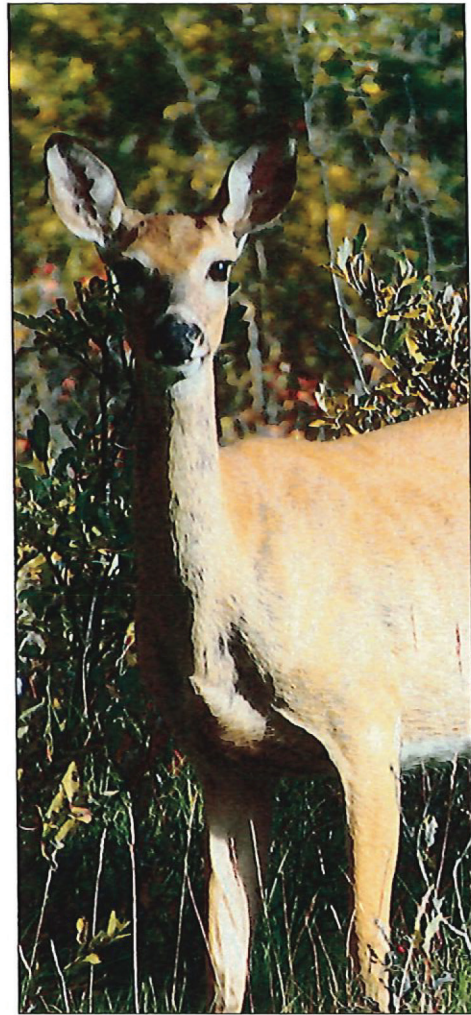
For more regulations and tips on safe boating download the Safe Boating Guide from Transport Canada (www.tc.gc.ca/marinesafety).

Canoe Circuit

The Interior Lakes Canoe Circuit includes four different lakes - Jackson, Kinnaird, Blackett and McGuffin. There are also roughed-in trails that provide challenging portages to connect to Dabbs, Touchwood and Seibert lakes. Another route to access the canoe circuit is from Shaw Lake Day Use Area (cross Shaw Lake, then portage for 3 kilometres on the Mosquito Lake Trail to McGuffin Lake). The trail is in excellent shape but the hills are demanding. As with other portages outside the canoe circuit, currently there are no canoe carts on these sections.

The Interior Lakes Canoe Circuit is approximately 38 kilometres in length. You will probably need three days to complete it. Most canoeists jump onto the Interior Lakes Circuit from Jackson Lake Staging Area on Highway 663 (locally called Touchwood Lake Road). There is a parking lot at the staging area and access to some "made in Lakeland" canoe carts. These carts are stored approximately 50 metres down the portage from the parking lot. The maximum load on these carts is 270 kilograms (600 lbs). Ratchet strap your canoe onto the cart right side up and load your gear.

Canoe carts are available at Jackson Lake, Kinnaird-Blackett, Blackett-McGuffin, and McGuffin-Jackson Ponds portages. Canoe carts can be



left at either end of the portage. The only catch is that if a cart is not on your end, you'll have to hike to the other end to grab one. There are approximately 15 carts at Jackson Lake Staging Area and two each at the other portages. If there are any maintenance issues with the carts, call Alberta Parks in Lac La Biche.

The canoe circuit is all flat water and an easy paddle. Just watch the skies and listen to the wind, as the lakes can get choppy in short order. The lakes are small enough that there are very few times, unless you choose, when you'll be more than a stones throw from a shoreline.

In years when water levels are lower and vegetation growth high, the north arm of Jackson Lake, Jackson Lake Ponds, the north end of Kinnaird Lake and the creek from Kinnaird to Blackett can be shallow, though still passable.

Portage distances are marked on the map. Jackson Lake portage is a 45-minute to one hour walk. Kinnaird-Blackett and McGuffin-Jackson Ponds portages are fairly short and simple. The portage between Blackett-McGuffin is hilly and a bit more challenging than the others.

Cycling

When coming up behind other trail users and when approaching blind corners, use your bell to warn others of your presence. Stay alert! You could startle bears or other wildlife if you move too quietly along trails

Fishing

Sport fishing in Lakeland is popular and demand often exceeds the capabilities of area lakes to produce sufficient numbers of fish, especially walleye. Catch and release fishing is still enjoyable and allows fish stocks a chance to return to productive levels. Get tips and details on proper catch and release practises from your Alberta Guide to Sport Fishing Regulations or from www.srd.alberta.ca.

Barbless hooks are mandatory. They make it easier to release fish with less handling. If you have barbed hooks they can be made barbless by pinching back the barb with your pliers.

Refer to the current Alberta Guide to Sport Fishing Regulations for seasons, size restrictions and catch limits.

To prevent lead poisoning in fish and birds, avoid use of lead sinkers.

Dispose of used fishing line in garbage receptacles. Birds and animals that get tangled in improperly discarded line eventually die as a result.

Hiking

Use well-defined trails.

Walk single file to avoid widening trails.

Don't create your own pathways around muddy or rough sections of trail; this makes the problem worse.

Avoid low wet areas; when this is not possible, take care to minimize your disturbance of vegetation.

Keep litter in your pockets or bring along a bag to put it in. As you hike pick up any litter you find along the trail.

Hunting

First Nations hunters and recognized Metis harvesters are allowed to hunt year-round in Lakeland Provincial Recreation Area.

For the general public, recreational hunting is allowed in Lakeland Provincial Recreation Area, Wildlife Management Unit (WMU) 841, during specified hunting seasons. Consult the Alberta Guide to Hunting Regulations for details and information on how to apply for hunting licences.

Hunters should use extreme caution and be aware that others may be hiking, cycling, canoeing or camping in the area. Hunting is not allowed within 400 metres of campgrounds.



Off-Highway Vehicles (OHVs)

ATVs and snowmobiles are only allowed on designated motorized trails in Lakeland Provincial Park and Provincial Recreation Area. Many designated trails have been upgraded so that ATV use does not degrade trail and landscapes. When operating ATVs and snowmobiles on these trails, please:

- Stay within the edges of trails. Do not creep around the edges of water holes or downed trees as this causes trail widening or braiding.
- Carry a saw to clear downed trees on the trail.
- Use boardwalks on the trail when provided. They have been placed to allow access over impassable or sensitive areas. Riding beside them destroys what they are there to protect.

- Drive cautiously and try not to spin tires excessively in muskeg and muddy areas as this will turn a small rut into an impassable hole.
- Be on the lookout for other users (hikers, bicyclists and others) - speed differences can be dangerous.
- Be respectful of wildlife you encounter. Allow animals to leave the trail on their own without prompting.

By staying on designated trails and practising responsible operation of OHVs, you will help to ensure that Lakeland remains a great place to visit.

Minimize Your Impact

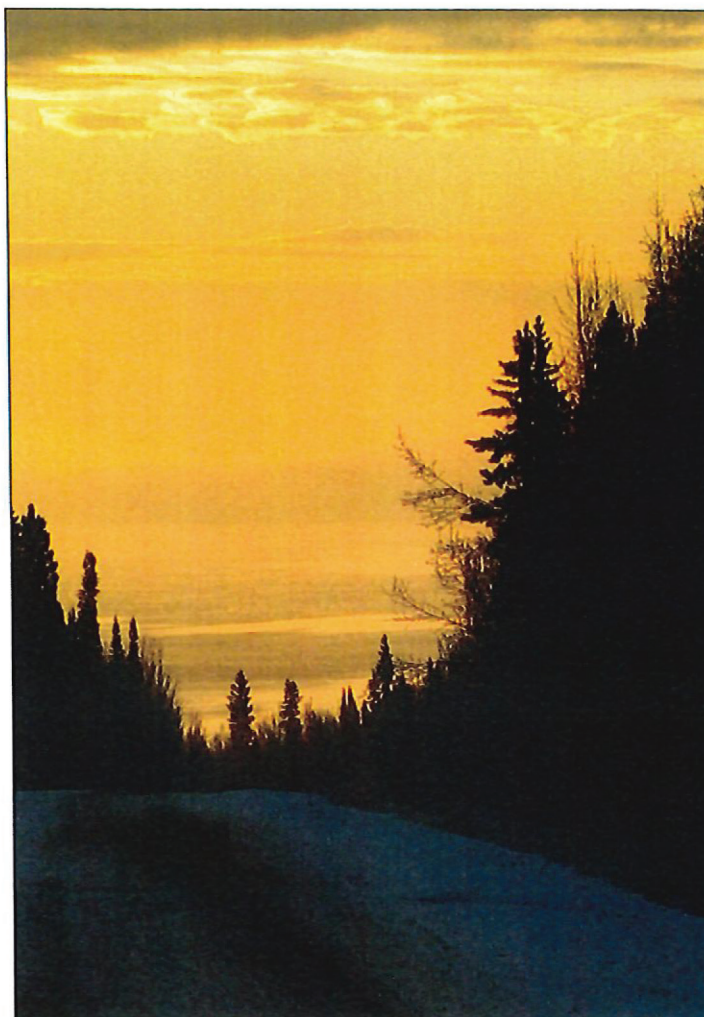
Be aware of your effect on the environment and act responsibly.

- Familiarize yourself with regulations in effect in the areas you are using. Choose lightweight equipment that is durable and safe.
- Park your vehicle in a designated parking area; avoid parking on roadside meadows or other sensitive areas.
- Check trail and campsite conditions before you go.
- Be aware of the potential negative effects of recreational use (wildlife disruption, soil and water contamination, loss of vegetation cover, soil erosion).

When in the backcountry, garbage must be packed out, never buried. Wildlife that find and dig up garbage become accustomed to human food and become problem wildlife. Feeding wildlife creates similar problems.

Safety in the Back Country

Know the basics of navigation, first aid and minimum impact camping. Know your route and the area; obtain proper maps and keep track of where you are at all times by map and compass, GPS, or both. Use caution when fording streams - they can be dangerous, especially when stream flows are high.



Muskeg and fen/bog areas can be extremely wet and have little or no surface tension when walked on. If you step down and see the ground move ahead of you, it is wise to travel around the area.

Never travel alone.

Inform family, friends or authorities of your route and your expected return time. Once you're missed, a search party will be sent out.

Bring sufficient clothing and gear such as food, matches, first aid kit and emergency blanket, even on day trips.

Be prepared for weather changes. Dress in layers. Bring clothing and equipment that will keep you warm, dry and comfortable.

If you get lost, stay put. Keep warm and dry.

In an emergency, think first ... then act. This will increase your chances of survival.

Familiarize yourself with wildlife safety techniques.

When heading into bear country:

- Warn bears of your presence by making noise.
- Be aware of bear signs such as tracks, droppings, diggings and food sources such as carcasses and berry patches.
- If you see a bear, or fresh bear signs, leave the area and notify Alberta Parks staff.
- For detailed information about safety in bear country, read our Bear Smart brochure, downloadable from www.albertaparks.ca.

Don't forget, other wildlife like moose, can also be dangerous. Stay alert and aware to avoid dangerous close encounters

Trapping

Trapping is a traditional activity that still occurs in Lakeland Provincial Park and Provincial Recreation Area. There are trappers' cabins and numerous trails for setting traps in Lakeland. These cabins and trails are marked as being part of a trapline. Please respect the cabins and use only designated trails.

Oil and Gas Development

Gas exploration and development are allowed only under strict access and development regulations to minimize the environmental footprint these activities have. If you come across oil and gas infrastructure, do not touch or attempt to alter the equipment as this can be extremely dangerous.

On a side note, all gas wells and booster stations have visible signs outside with the legal land description marked on them. You can use these descriptions along with your map as a navigational tool to determine your location.

CFB Cold Lake

Lakeland Provincial Recreation Area borders Cold Lake Air Weapons Range. For safety reasons, do not travel in the Air Weapons Range. Signs

are posted along the boundary to prevent accidental wandering into this restricted area.

Occasionally you may spot military planes flying overhead. Those who are interested in identifying military aircraft can ask at the Alberta Parks office in Lac La Biche for a copy of our Military "Bird" Watcher's Guide.

Airmen's Cairns

Three lakes in Lakeland Provincial Park and Provincial Recreation Area, as well as several other lakes in the area are named in honour of twelve airmen and three soldiers from Alberta who were killed in combat during World War II. In 2003 the Lac La Biche branch of the Royal Canadian Legion began a program to commemorate these airmen and soldiers.

The Legion built and placed memorial cairns at each lake. Each cairn has a plaque that gives a brief history of each serviceman and his final actions, and another plaque with the Legion's prayer. The project was undertaken by the Royal Canadian Legion, the Canadian military, Alberta Parks, Sustainable Resource Development, and countless local individuals. Our duty to honour and remember those who gave their lives for our country is exemplified by these cairns.

Emergency Numbers

Alberta Parks District Office (Lac La Biche)	(780) 623-7189
Alberta Parks Lakeland Complaint Line	(780) 623-5200
Emergency (including ambulance)	911
R.C.M.P. (Lac La Biche)	(780) 623-4380
Forest Fires	310-FIRE
Report-A-Poacher	1-800-642-3800

For Further Information:

Lakeland Provincial Park and Provincial Recreation Area
Box 1019
Lac La Biche, AB
T0A 2C0
phone: (780) 623-5235
fax: (780) 623-5239

Alberta Parks
www.albertaparks.ca
1-866-427-3582

Lac La Biche Area information
www.laclabicheregion.ab.ca
1-866-623-9696

Recommended resources:

Alberta Guide to Sport Fishing Regulations (published annually):

- available where you purchase fishing permits and online at www.srd.alberta.ca

Alberta Guide to Hunting Regulations (published annually):

- available where you pick up hunting permits and online at www.srd.alberta.ca

Parks Brochures (downloadable from www.albertaparks.ca):

- Bear Smart
- Living With Cougars
- Regulations brochure
- Research & Collection Permits
- Filming & Photography in Albert Parks

Topographic maps can be purchased from retail map dealers.

Transport Canada's Safe Boating Guide (downloadable from www.tc.gc.ca/marinesafety)

www.leavenotrace.ca/main.html

TEAM AUCTIONS

Sekura Auctions Since 1966

BOOK YOUR AUCTION NOW!

Drayton Valley, AB
HEAD OFFICE
(780) 542-4337

Fairview, AB
NORTHERN ALBERTA
(780) 834-6888

Taber, AB
SOUTHERN ALBERTA
(403) 634-4189

Kamloops, BC
BRITISH COLUMBIA
(250) 212-1707

To download the
TEAM Auctions App



VISIT OUR WEBSITE TO VIEW ALL OUR UPCOMING AUCTIONS!

teamau**ctions.com**